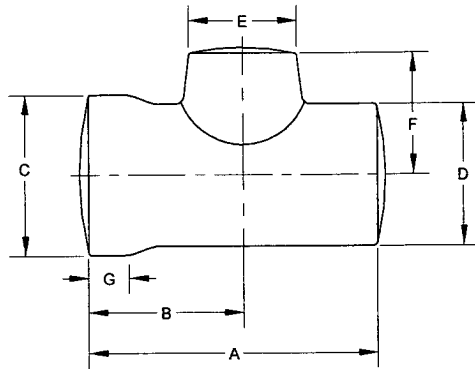
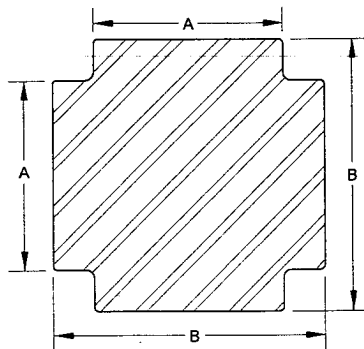


Northland Forge Ltd. - Tee and Cross Forging Summary

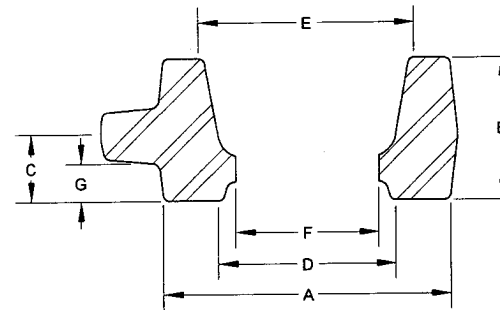
Flow Tee Forging



3" - 6000# Cross Forging



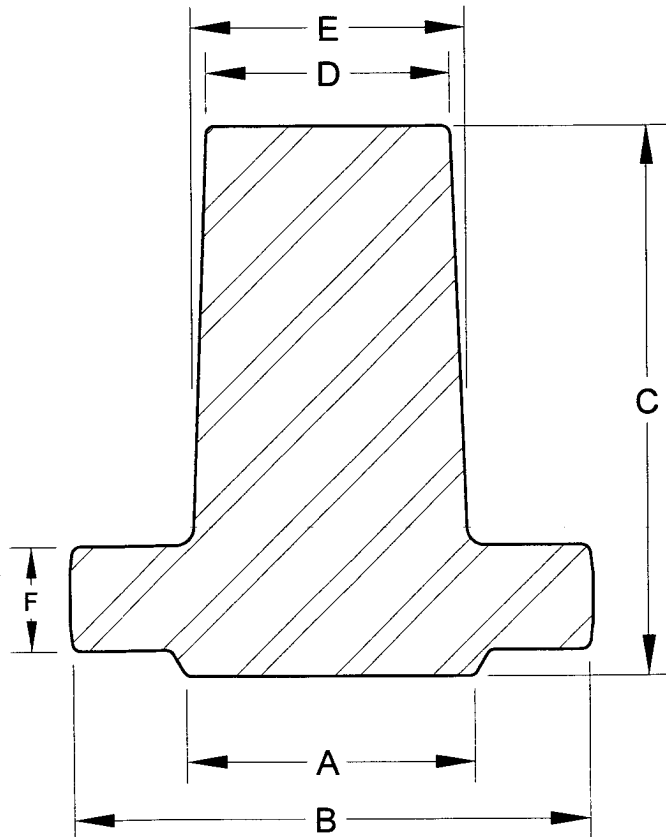
Flow Tee Cap Forging



Description	Dimension (in.)							Drawing Number
	A	B	C	D	E	F	G	
Flow Tee	8.75	4.69	4.88	4.31	3.25	3.69	1.25	NF 0160
Flow Tee Cap	5.75	2.88	1.31	3.38	4.13	2.87	0.75	NF 0161
3-6000# Cross	5.75	8.25	—	—	—	—	—	NF 0162

August 2009

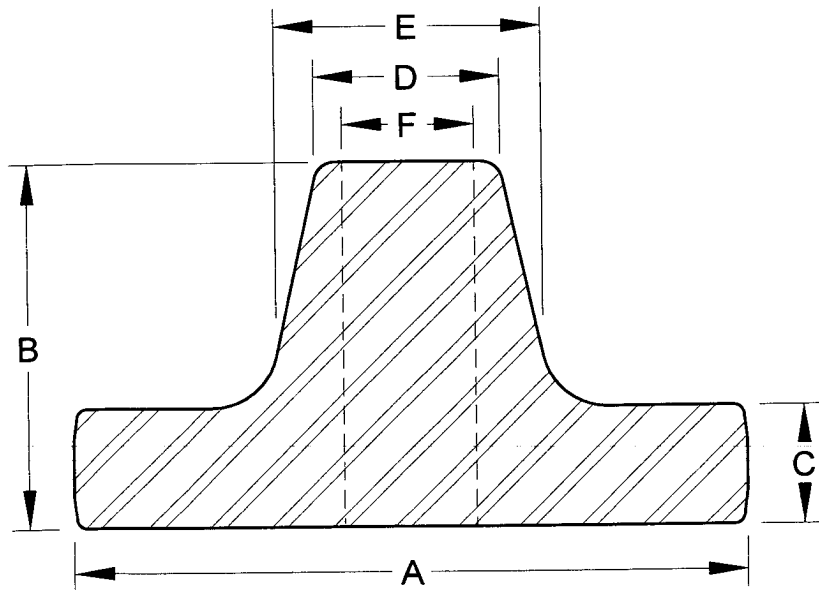
Northland Forge Ltd. - Valve Bonnet Forging Summary



Nominal Size (in.)	Max. Working Pressure (PSI)	Dimension (in.)						Drawing Number
		A	B	C	D	E	F	
2-1/16	2000	3.75	6.13	7.81	3.50	4.16	1.25	NF 0121
2-1/16	5000	4.13	7.38	7.88	3.50	3.94	1.50	NF 0122
2-9/16	5000	4.50	8.13	7.75	4.00	4.50	1.63	NF 0123
3-1/8	5000	5.25	9.38	8.75	4.50	5.00	2.00	NF 0203
4-1/16	5000	7.00	12.43	10.63	5.75	6.75	2.63	NF 0202

August 2009

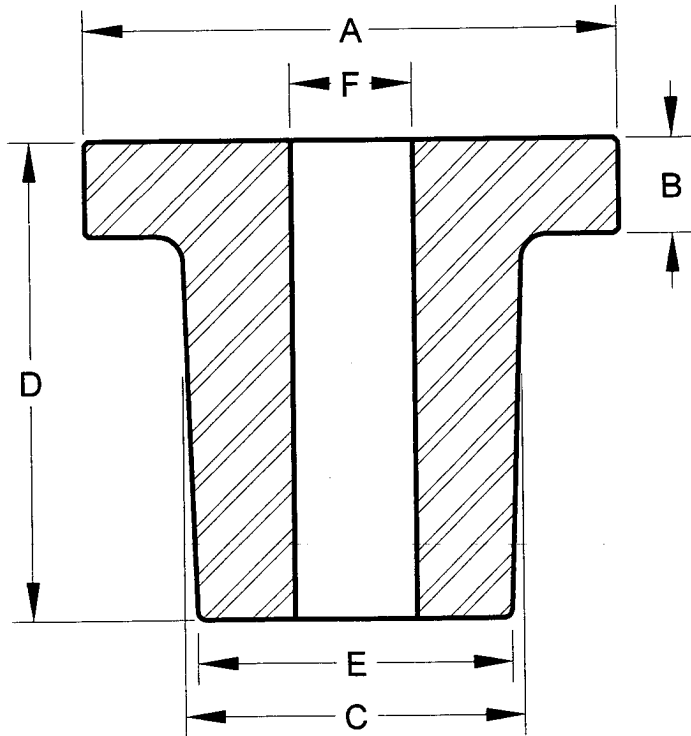
Northland Forge Ltd. - Male Pin Adapter Bonnet Forging Summary



Nominal Size (in.)	Max. Working Pressure (PSI)	Dimension (in.)						Drawing Number
		A	B	C	D	E	F	
7-1/16	2000	14.31	7.44	2.44	3.94	6.25	Solid	NF 0110
9	2000	16.75	8.88	2.88	9.00	10.00	3.0	NF 0111
7-1/16	3000	15.25	8.38	2.75	4.00	6.63	Solid	NF 0112
7-1/16	5000	15.80	8.00	3.94	5.00	6.35	Solid	NF 0113

August 2009

Northland Forge Ltd. - Casing Head Forging Summary



Nominal Size (in.)	Max. Working Pressure (PSI)	Dimension (in.)						Drawing Number
		A	B	C	D	E	F	
7-1/16	2000	14.25	2.56	9.75	14.00	8.88	3.5	NF 0204
7-1/16	2000	14.25	2.56	9.75	14.00	8.88	6.0	NF 0205
7-1/16	3000	15.25	2.75	9.95	13.75	9.00	3.5	NF 0103
7-1/16	3000	15.25	2.75	9.95	13.75	9.00	6.0	NF 0104
7-1/16	5000	15.75	4.13	10.00	14.63	9.13	3.5	NF 0101
7-1/16	5000	15.75	4.13	10.00	14.63	9.13	6.0	NF 0102

August 2009