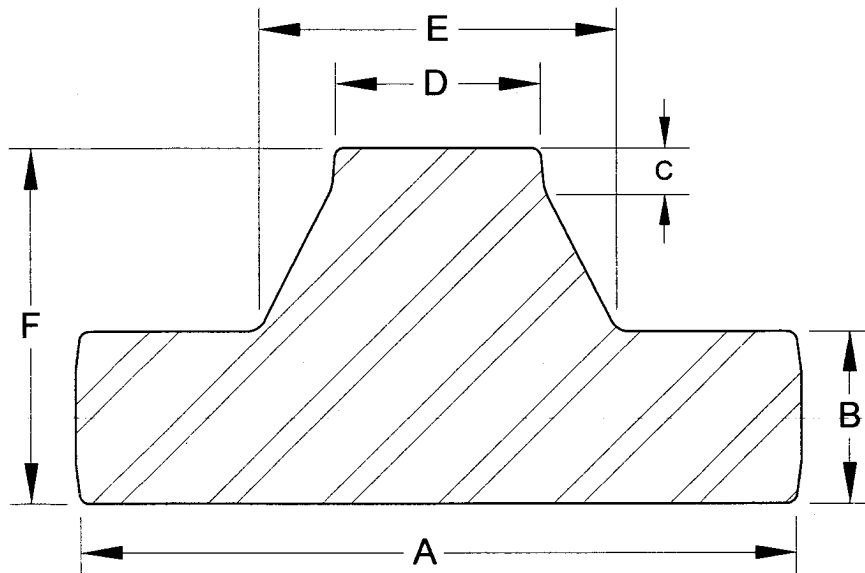


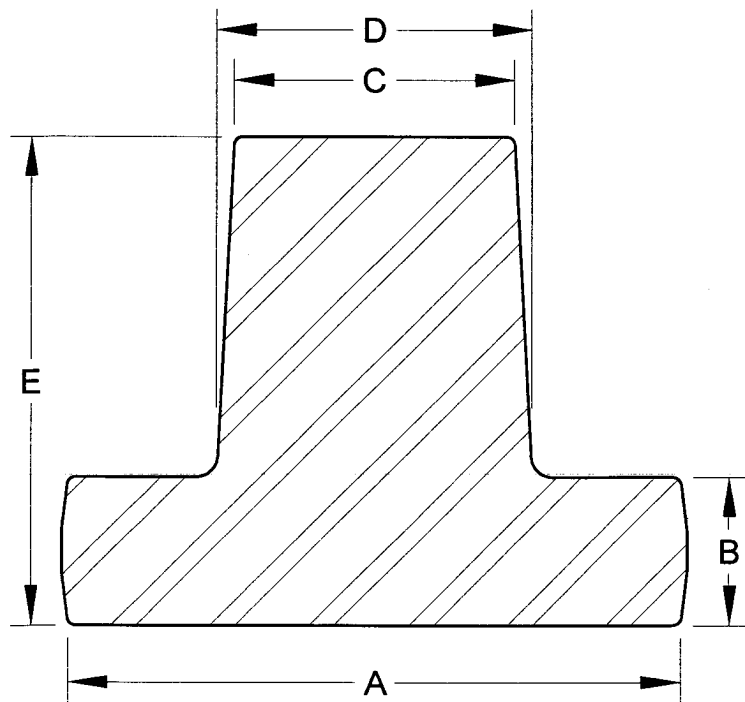
Northland Forge Ltd. - Weld Neck Flange Forging Summary



Nominal Size (in.)	Max. Working Pressure (PSI)	Dimension (in.)						Drawing Number
		A	B	C	D	E	F	
2-1/16	2000	6.73	1.68	0.50	2.59	3.52	3.57	NF 0140
3-1/8	3000	9.75	2.13	0.50	3.75	5.25	4.56	NF 0141
4-1/16	3000	11.79	2.47	0.80	4.69	6.48	5.18	NF 0142
2-1/16	5000	8.64	2.13	0.50	2.50	4.38	4.38	NF 0143
3-1/8	5000	10.80	2.44	0.50	3.75	5.50	5.18	NF 0144
4-1/16	5000	12.50	2.69	1.18	4.75	6.63	5.44	NF 0145
5-1/8	5000	15.00	3.50	0.66	5.75	6.00	6.75	NF 0146
1-13/16	10,000	7.63	2.00	—	2.75	3.75	4.63	NF 0147
2-1/16	10,000	8.64	2.13	0.50	3.19	4.31	5.09	NF 0148
3-1/16	10,000	10.89	2.65	0.88	4.63	5.81	5.80	NF 0149
4-1/16	10,000	12.68	3.00	0.88	6.00	7.40	6.73	NF 0150

August 2009

Northland Forge Ltd. - Extended Flange Side Outlet (E.F.S.O.) Forging Summary



Nominal Size (in.)	Max. Working Pressure (PSI)	Dimension (in.)					Drawing Number
		A	B	C	D	E	
2-1/16	2000	6.73	1.68	3.50	4.00	5.34	NF 0130
3-1/8	3000	9.75	2.13	5.00	5.50	7.50	NF 0131
2-1/16	5000	8.64	2.13	4.00	4.50	7.00	NF 0132
3-1/8	5000	10.80	2.44	5.63	6.25	7.68	NF 0133

August 2009